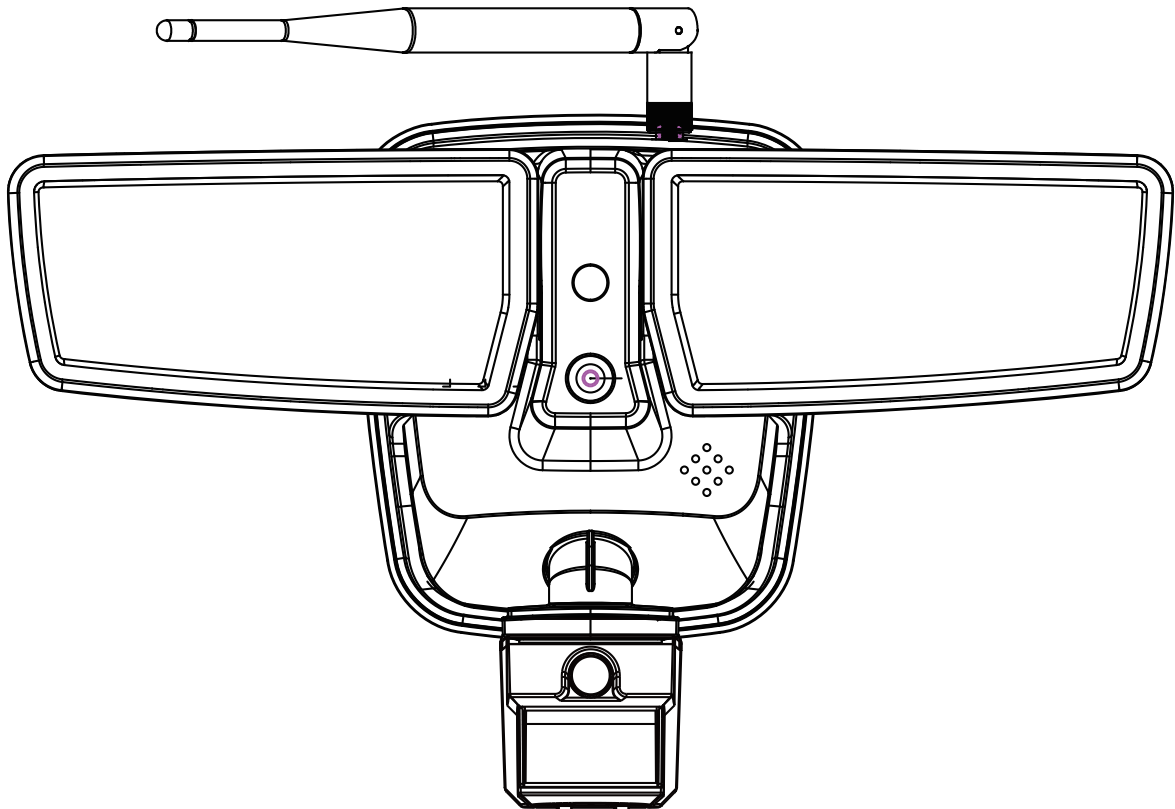


CHALLENGER

INSTALLATION AND USER GUIDE

SECURITY FLOODLIGHT



Model SLFLEDWIFI

Safety Instructions

PRECAUTIONS

- Please read and understand this entire manual before attempting to assemble, install, or operate this light fixture.
- This light fixture requires 220-240-Volt AC power source.
- The light fixture should be installed by a qualified electrician or competent person.
- This light fixture must be properly grounded.
- This light fixture should be installed outdoors to a wall .
- The light fixture should be mounted approximately 8 ft. (2.4 m) above the ground.

Safety Information



WARNING: Turn the power off at the circuit breaker or fuse. Place tape over the circuit breaker switch and verify power is off at the light fixture.



CAUTION: To avoid water damage and the risk of electrical shock, the motion sensor controls must be facing the ground when the installation is complete.



WARNING: Risk of fire. Keep the lamp heads at least 2 in. (51 mm) from combustible materials.



CAUTION: Burn hazard. Allow the light fixture to cool before touching.



WARNING: please take off the TF card after power off. If you take TF card before power off, it might cause device damage.

NOTICE: Do not connect this light fixture to a dimmer switch or timer.

Pre-Installation

PLANNING INSTALLATION

Before installing the light fixture, ensure that all parts are present. Compare parts with the *Hardware Included* and *Package Contents* sections. If any part is missing or damaged, do not attempt to assemble, install, or operate this light fixture.

SPECIFICATIONS

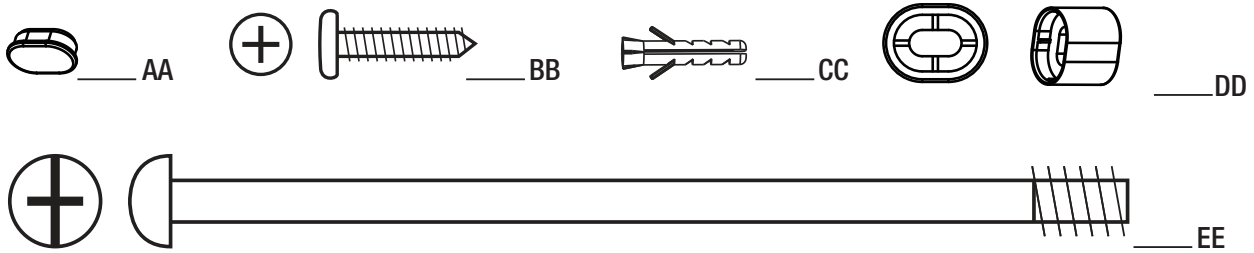
Range	Up to 12 m
Sensing angle	Up to 110°
Electrical load - LED	19 Watts
Lumens	1100
Power requirements	220-240 VAC, 50 Hz
Time adjustment	5 seconds-10 minutes

Pre-Installation (continued)

HARDWARE INCLUDED

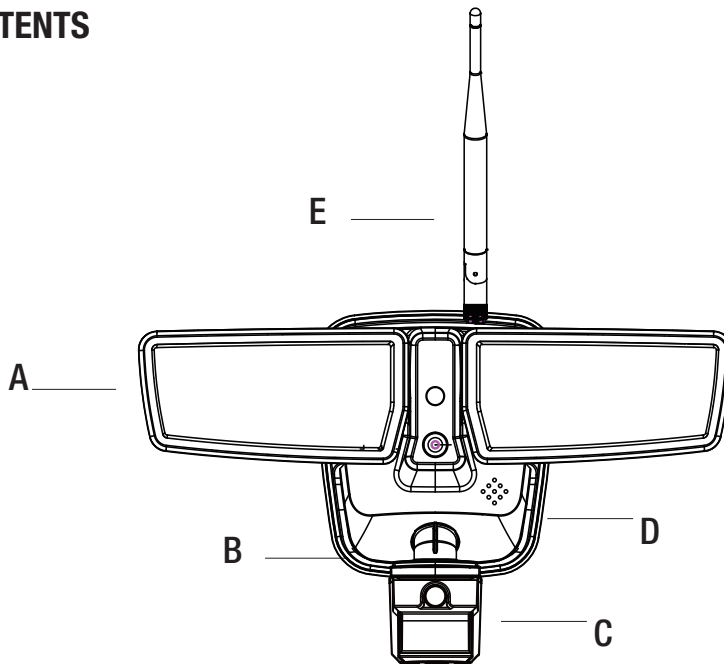


NOTE: Hardware shown to actual size.



Part	Description	Quantity
AA	Plastic plug	4
BB	Mounting bracket screw	4
CC	Anchor	4
DD	Small mounting bolt	4
EE	Large mounting bolt (pre-installed)	1

PACKAGE CONTENTS



Part	Description	Quantity
A	Lamp head	2
B	Light fixture	1
C	Motion sensor	1
D	Rear Housing Cover	1
E	Wifi Antenna	1

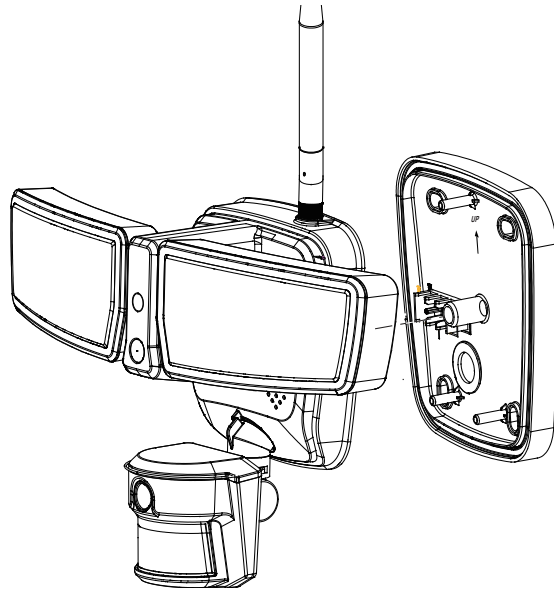
Installation

1 Removing the rear housing cover

- Unscrew the large mounting bolt (EE) connecting the light fixture (B) to the rear housing cover and remove the rear housing cover.



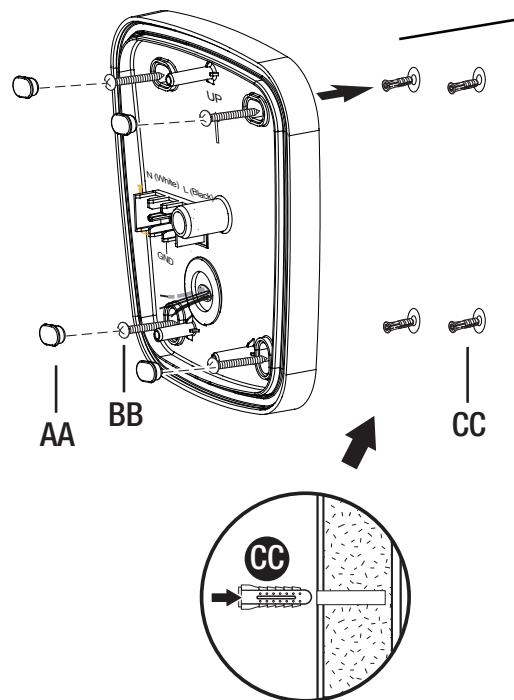
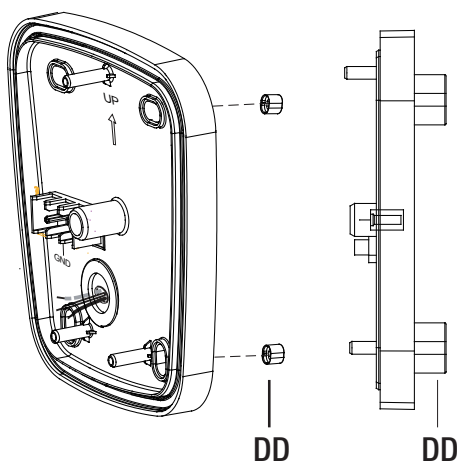
NOTE: A clear rubber gasket is pre-installed in the rear housing cover. Gasket is shown as black in illustrations for clarity.



2 Installing the rear housing cover

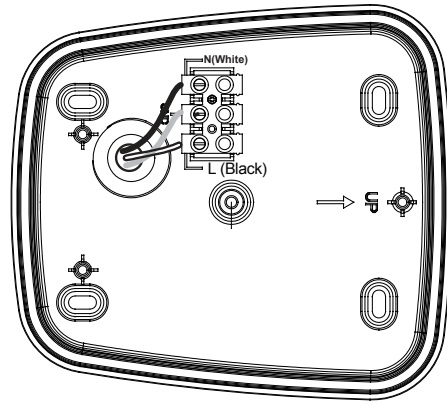
- Route the electrical cables through a hole in the rear housing cover
- Place the rear housing cover against the wall.
 - When mounting to a wall, the “UP” arrow must point upward.
- Insert the small mounting bolt (DD) through the rear housing cover hole located below the threaded hole.

- In order to mount the rear housing cover (D), mounting holes must be drilled out. Place rear housing cover (D) over the mounting location and mark the center of the holes to be drilled into the mounting surface. Drill a pilot hole into the surface. For mounting to concrete or masonry, install the anchors (CC), by drilling two pilot holes and tap them into place so they are flush with the surface. Fasten rear housing cover (D) to mounting surface with mounting bracket screw (BB).
- Insert the plastic plug (AA) to the mounting bracket screw (BB).



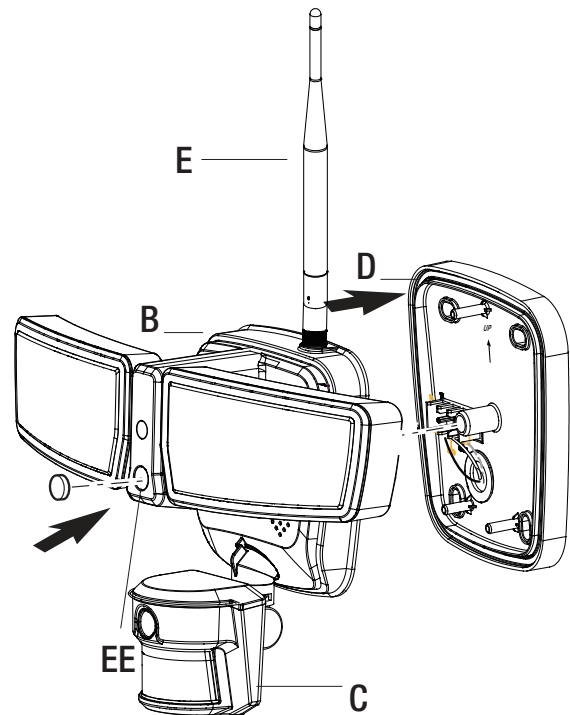
3 Making the electrical connections

- Insert electrical cables into the side of the terminal block
- Insert the blue cable into the terminal marked “N”.
- Insert the brown cable into the terminal marked “L”.
- Insert the green/yellow cable into the terminal marked “GND”.



4 Mounting the light fixture

- Verify the rubber gasket is properly seated around the edge of the rear housing cover (D)
- Align the bottom edge of the light fixture (B) with the bottom edge of the rear housing cover (D). Tilt the light fixture (B) toward the rear housing cover (D) making sure the light fixture (B) is centered on the rear housing cover (D)
- Tighten the large mounting bolt (EE) securely through the center of the rear housing cover (D). Do not overtighten.
- Push the plastic plug firmly into the mounting bolt hole on the light fixture (B).



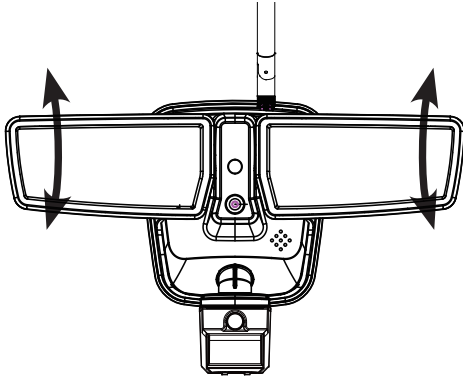
Operation

1 Adjusting the lamp heads

- Turn the power on at the circuit breaker or fuse and turn on the wall switch.
- If needed, gently grasp the lamp heads (A) and tilt them up or down to adjust the light coverage area.



NOTE: The lamp heads are designed to rotate up and down only. Do not attempt to rotate any other direction.



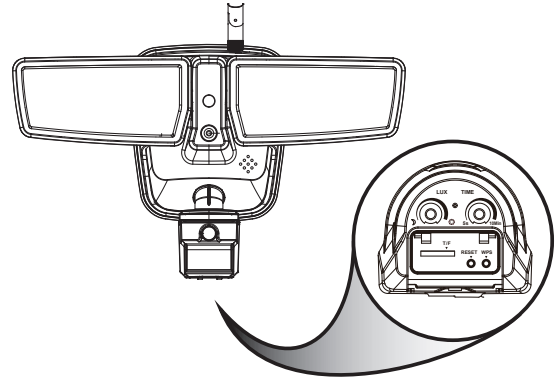
2 Rotating the sensor controls downward



CAUTION: To avoid water damage and risk of electrical shock, the motion sensor controls must be facing the ground when installation is complete.

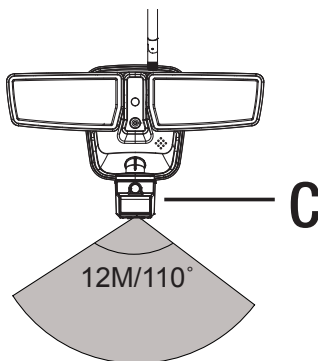
- Rotate the motion sensor (C) so the controls face toward the ground.

NOTICE: All clearances must be maintained.



3 Adjusting the motion sensor detection zone

- Perform a “walk test”: walk in an arc across the front of the motion sensor (C).
- Watch the light. The light will come on and the red LED will flash indicating motion has been detected.
- Stop, wait for the light to turn off, and then begin walking again.
- Continue this process until the detection zone has been established.
- If needed, gently grasp the motion sensor (C) and move it from side to side or up and down to adjust the detection zone.



4 Setting the sensor head switch

- ☾ * Dusk Level setting

This is the setting on the left as shown on the Diagram 1. It is used to control the desired ambient light level for the Motion Security Light to trigger and turn on. You can set the light to turn on only in darkness by turning the setting fully counter-clockwise ☾, or allow the security light to trigger even during daylight by turning the setting fully clockwise ☀, or at any ambient light level in between.

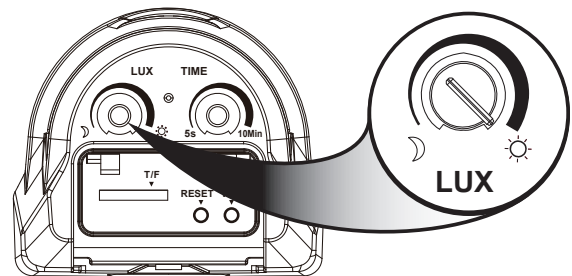
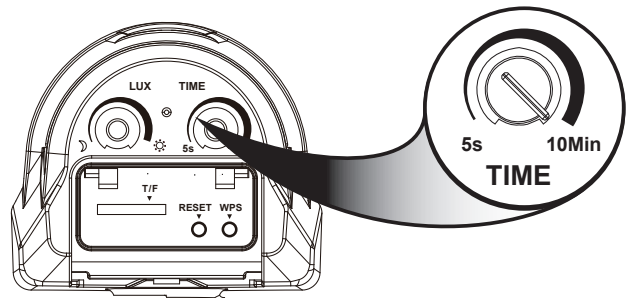


Diagram 1

5 Setting the sensor head switch

□ - ○ + **Time setting**

This is the setting on the right as shown on the Diagram 1 . It is used to control the time span which the light is on when motion is detected. You can turn the light off by turning the setting fully counter-clockwise or set the time span between 5 seconds to maximum 10 minutes by turning the setting clockwise. The security light will stay on as long as motion is detected and will go off after the time span you set after no motion is detected.



6 Using override mode

- Using auto override: You can also turn the lights on should be from the wall switch by turning it off/on/off/on within 3 seconds. The light will stay on all night and will turn off automatically at dawn and reset back to security mode for the next morning.

7 Troubleshooting notes

Problem	Solution
Lamp stay off	Check the power it is switched on at the fuse panel circuit breaker and at the wall switch.
Lamp flashing	Cover PIR lens with black cloth/aluminum foil paper, if the lamp function is normal, then check following
	1. check any heat around the detection area
	2. check the PIR sensor facing any tree
	3. check the PIR sensor facing any fan or air conditioner
PIR sensor will not activate during daytime	Adjust the Dusk level control to daytime (fully clockwise)

SOFTWARE SETTING

Chapter I Brief Introduction of IP Camera

Introduction of IP Camera

- The SLFLEDWIFI Floodlight Camera combines an LED security floodlight with an integrated wireless IP camera device.
- The basic function of IP Camera is to transmit remote video data through a computer network. Using the H.264 hardware compression technique, the transmission speed of high quality video images across the network & internet can reach 25 frames per second real time.
- The transmission of IP CAMERA video data is based on TCP/IP protocol. The built-in Web server supports Firefox, chrome remote configuration and update firmware. You can use the SLFLEDWIFI to monitor areas in your home and office, or control the camera through network and manage images.

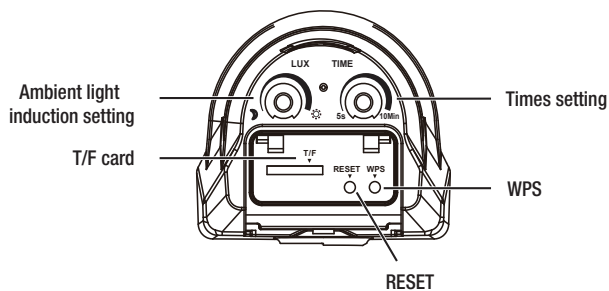
Product Features

- Powerful high-speed video protocol processor
- High-sensitivity 1/4" CMOS sensor
- Maximum 1.3 megapixel
- High-brightness LED illumination night vision
- Optimized H.264 video compression transmission
- Multilevel user management and password setting
- Built-in Web server that can be accessed by users through IE browser
- Support wireless network (Wi-Fi/802.11/b/g/n)
- Support Dynamic DNS (DDNS), UPnP and Internet (ADSL, broadband cable modem)
- Support bi-directional audio monitoring
- Support image capture
- Support protocols of many networks: HTTP/TCP/IP/UDP/SMTP/DDNS/SNTP/DHCP/FTP
- Support remote system update

Advanced Features

- **Support many transport protocols:** IP Camera supports many protocols, for example, TCP/IP, SMTP and HTTP. When the IPCAM alarm is triggered, it can send e-mail to you automatically.
- **PIR sensor:** You can detect and trigger the image recording and transmission through the internal pyroelectric sensor.
- **Support DDNS:** it is also convenient to use IPCAM when ADSL is used to access the internet or IP address is changed frequently, since IPCAM also provides the dynamic DNS function.
- **Advanced user management:** it only allows authorized users to access to the live video of IPCAM.

1 External View of the Product

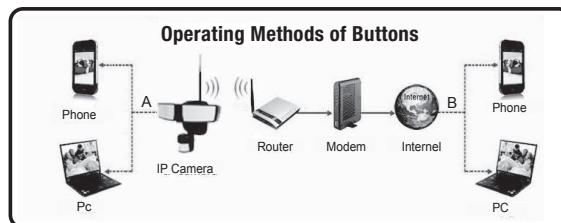


Indicator Status:

- **System start-up indicator:** The blue LED indicator will be on after it is powered on for 15 seconds, and it will enter the current mode indication, after the indicator is normally on for 20 seconds.
- **AP mode:** The blue LED indicator flickers with an interval of 1 second.
- **STATION mode:** The blue LED indicator is normally on. This is the normal operating mode once programmed.
- **Alarm:** The red LED indicator flickers with an interval of 1 second.
- **WPS setting mode:** The blue LED indicator flickers with an interval of 0.5 second.
- **Factory reset mode:** The red LED indicator is normally on and the blue LED indicator flickers with an interval of 0.3 second

2 Operating Methods of Buttons:

- **RESET button:** press the button for 3 seconds to enter the AP mode and 8 seconds to enter the factory reset mode.
- **WPS button:** press the button for 5 seconds to enter WPS.




- The connection between IP Camera and other devices are through WIFI.
- **As shown in the above figure:** A connection mode is to connect phone or PC to IP Camera directly. The precondition of this connection is that IP Camera is in the “factory reset” or AP mode.
- **The connection method:** First you need to disconnect the current wireless network from your device (pc or phone). Scan for the IP camera’s WIFI hotspot. This will be listed as “IPCAM-XXX” or similar. The default password is “null”; the function of this connection is to operate the built-in WEB server of IP Camera directly so as to set relevant parameters, including configuring IP Camera to the router. When using the connection of IP Camera and internet for the first time, its WIFI should be connected to the router in this way.
- B connection mode is that the user has installed the IP Camera, and the client software in the phone or PC can be used to view the monitoring screen in IP Camera.

1 Rapid Configuration of IP Camera

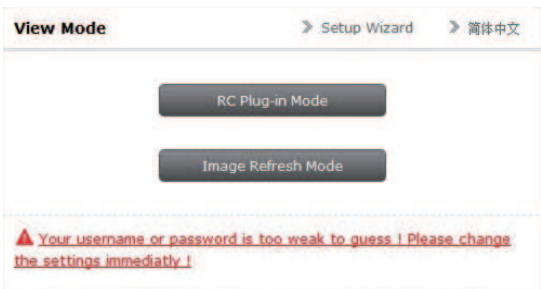
- If this product (IP Camera) is used for the first time, it should be connected to a router with Internet access. This process is called as the rapid configuration of IP Camera. If the user wants to change the connecting router, set the IPCAM in the “AP” mode and then conduct the rapid configuration of IP Camera.

2 The Method of Configuring IP Camera through PC

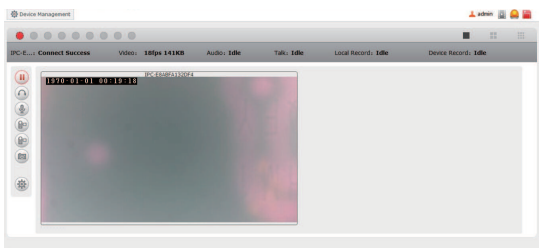
- Install the IP Camera software in PC
- Select the IPCAM_XXXXXX connection in the networking bar of PC; the password is null.
- Run the IP Camera software. 
- Double-click the IP address in the following prompt box and input the user name “admin” and password “null” into the box.



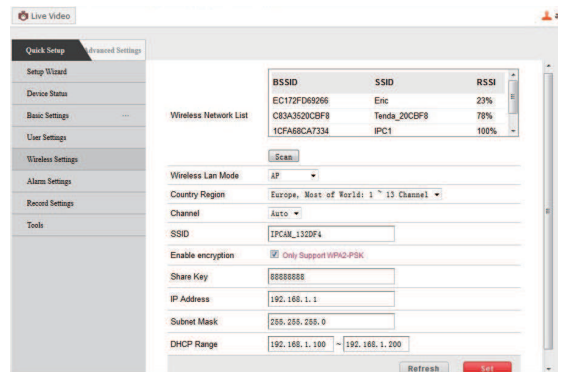
- Select “RC Plug-in Mode” in the prompt box below.



- Select “Device Management” in the prompt box below.

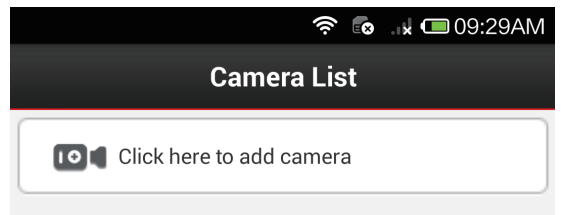


- First select “wireless settings” in the following prompt box and select “search” on the right. Then the available WIFI hot spot in the neighborhood will occur. Select the user’s own router and in the shared password box input its WIFI password. Click “set” and confirm. IPCAM will count down and restart. After restarting, the client software can be connected with IPCAM to see the screen.
- Reconnect to normal wireless network

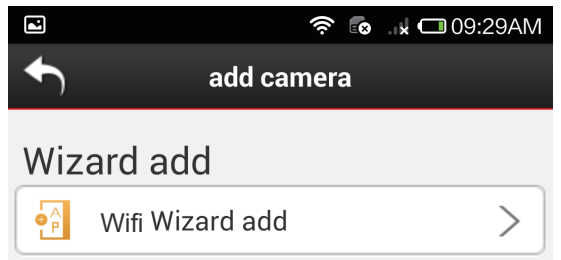


3 The Method of Configuring IP Camera through Phone

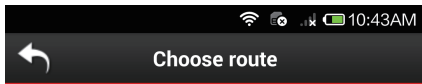
- Install the LSCAM APP in the phone.
- Select the IPCAM_XXXXXX connection in the networking bar of the phone; the password is null.
- Run the APP.
- Enter into “Click here to add camera.”



- Select and enter into “Wifi Wizard add”



- Follow the prompts and select “Next”.



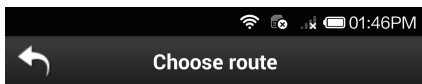
If your camera support wifi AP function?

If Yes,please go to next step.

If No,Please click the back button on the top to return wizard home and choose other connection wizard.



- The password should be empty, tap on password held and select “Next”.



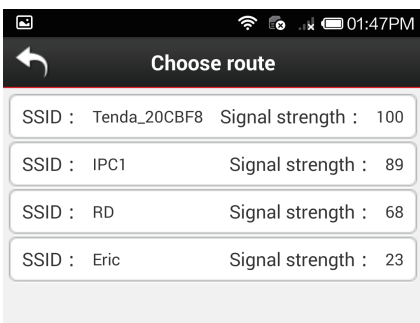
Please input camera's user name and password

*Username: admin

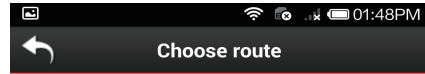
*Password:



- Choose router.



- Input the WIFI password of the router and select “Next”.



The WiFi you choosed is : Tenda_20CBF8
Authetication : WPA-PSK

Is the wifi you want?

If Yes,please input the password ,then go to next step.

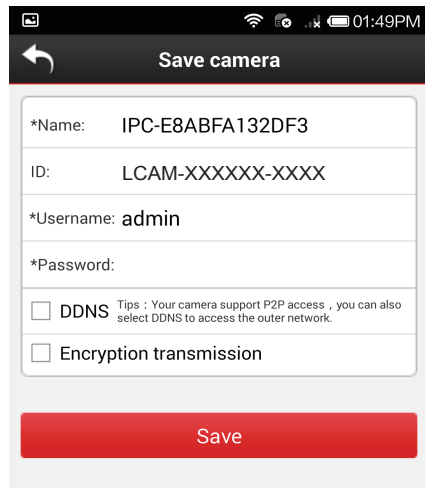
If No,Please go to back reselect.

Please input the WiFi password.

*Password: ••••••••



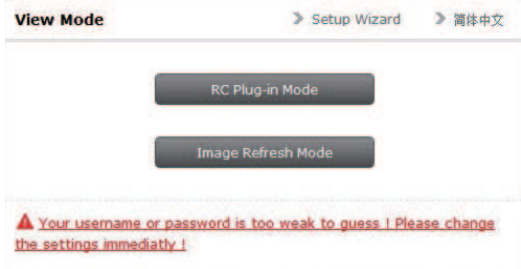
- Input the password of the camera default is blank and click “Save”. IPCAM will restart. After restarting, the software can be connected with IPCAM to see the screen.(you will need to reconnect to normal WIFI network)



Configuration Method of WPS:

Press the WPS button in the panel of IPCAM for 5 seconds. The blue indicator will flicker rapidly after entering into the WPS mode. Then press the WPS button in the router which connects to IPCAM (the operation of router entering into WPS mode should refer to the manual of router).

- When PC and IPCAM are in the same LAN, open the browser in PC, enter <http://192.168.1.168> (default address when in AP mode) in the address bar, and enter the default username and password after entering into the login interface. The username is admin and the password is empty. Select “RC Plug-in Mode”



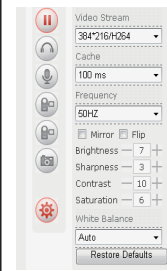
- Operation Guide
Live Video

When logging in the system for the first time, IE will prompt “Install the plug-in from Player ActiveX” automatically. Video can be seen after installing it according to the prompts in the page.

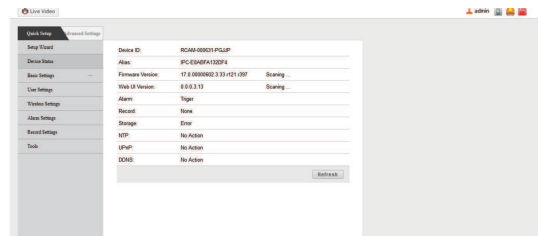
- The picture is the homepage after logging in the camera, and the menu page of live video. The serial numbers in the picture are explained as follows:

Serial No.	Name	Explanation
0	Menu bar	There are the live video and device management swift menus at the top left corner of the main interface
1	Switch of multichannel device	The live video of the camera can view 9 channels at the same time at most
2	Current device status	The connection, video, audio, talk and recording status of the current device.
3	Login device status	Recording, alarm and storage. It will popup more status information when the mouse moves to it.
4	User information	The username of the current login user: admin
5	Switch of multiple device (2409M)	Switch among one device, four devices and nine devices.
6	Audio and video options as well as record and snapshot	Adjust the audio and video of the camera, live video playing and basic attribute setting of the camera
		<ol style="list-style-type: none"> Control the playing or stop of camera video Control the open and close of camera audio Start dialogue Local recording. The time can select 10, Device recording When snapshotting, the camera has the options of continuous capture modes of 3, 4, 5 and 6 photos

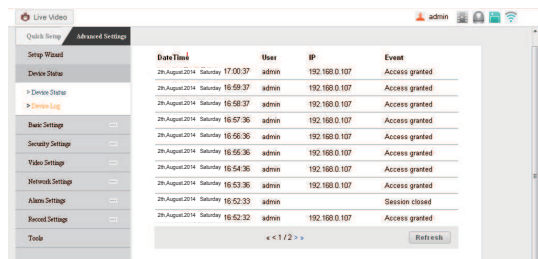
7. Setting of camera parameters	
7	Device parameter setting
	<ol style="list-style-type: none"> Adjust the camera resolution (4 options) Adjust the camera buffer time Adjust the camera frequency (50HZ, 60HZ) Select camera mirror and flip Set the brightness of camera Set the sharpness of camera Set the contrast of camera set the saturation of camera Set the white balance Restore defaults



- Device Management
Device Status

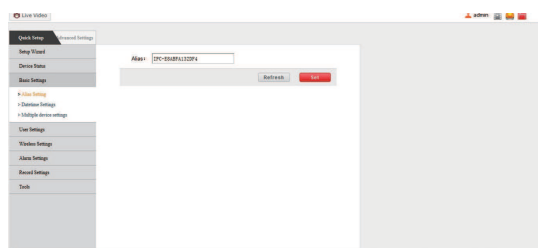


- Basic status of the device

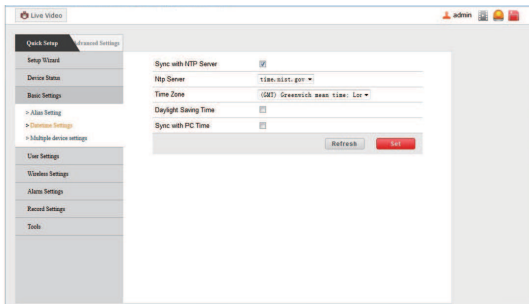


Device Log which records the last 100 device logs of the camera

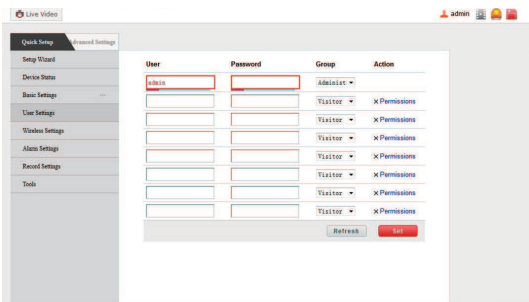
- Basic Settings



Alias Setting



User Settings

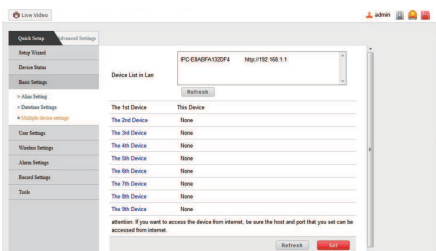


- User Settings: it can set eight users at most as admistors or visitors. It can also set the permissions on their video, snapshot, device record, audio, talk and control.
- Setting requirements of username and password: the username, being a required field, can not be 'admin'. For the group of administrators, the password should have six characters at least and include figures and letters.

Setting allows access:



Multiple device settings



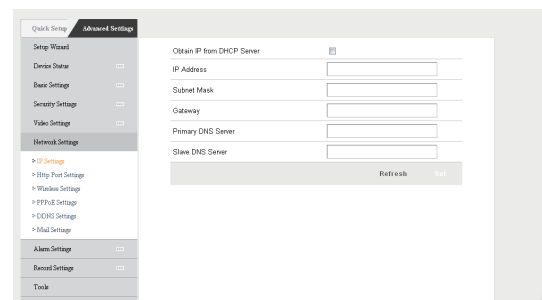
it can set eight devices at most and can connect eight multiple devices at the same time.

Network Settings

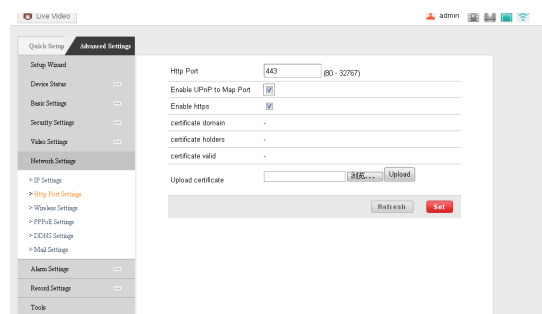
If the router connected by the device has the function of DHCP server, you can check "Obtain IP from DHCP Server". Otherwise, fill in the network parameters as shown in the figure below manually.

Http Port: in most cases, you can set it as 80. However, if your internet service provider stops this port, you may have to set it as other optional values (from 0 to 65535, do not set it as the same value as gateway), for example, 8080, 85, 8888, etc.

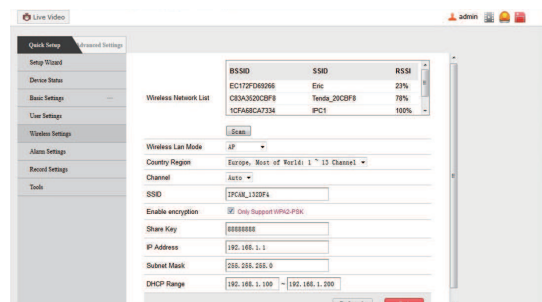
IP Settings



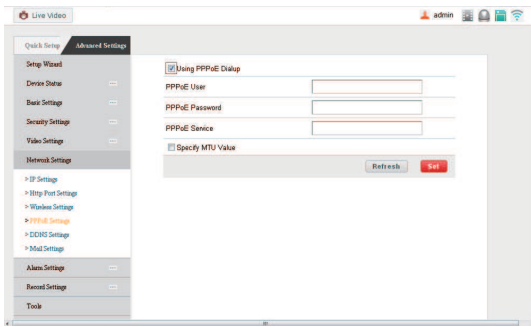
Http Port Settings



Wireless Settings

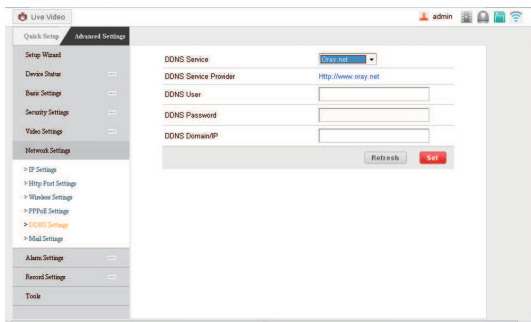


PPPoE Settings

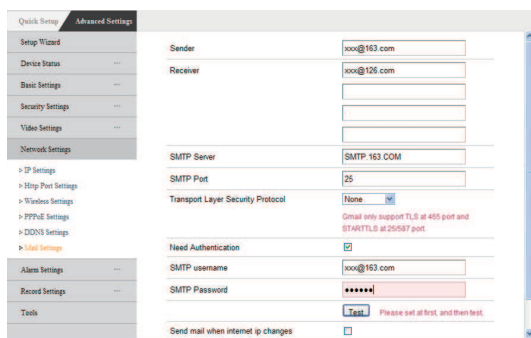


DDNS Service

- DDNS Service: the system supports the protocols provided by DynDNS.org, 3322.org, Oray.net, 9299.org, No-ip.com and myfocam.org in DDNS service.
- Username and password: the username and password you used when applying for domain name.
- DDNS Domain: the domain you applied for the device.



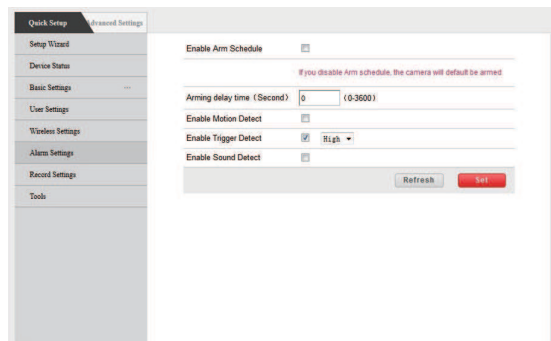
The setting page of mailbox



- Configure the e-mail sent and received. When there is an alarm or the IP address of the device changes, the receiver will receive the e-mail of the sender.
- Note: send alarm capture through e-mail. Check Alarm Settings → Mail Notification after Alarm.

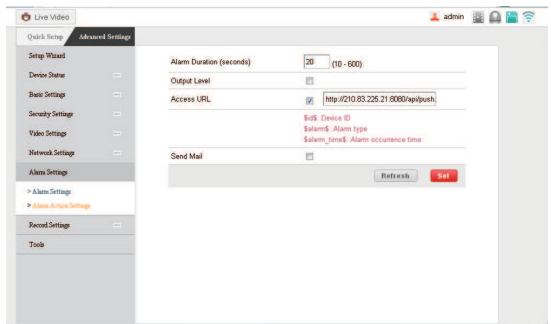
- **Sender:** the mailbox to send e-mails.
- **Receiver:** the mailbox to receive captures and IP addresses. Four receiving mail boxes can be set at most.
- **SMTP Server:** the SMTP server to send mails.
- **Need Authentication:** if the sender needs to be authenticated, please fill in the correct username and password.
- **Mail Test:** fill in the above mail parameters and click "Set" for test. You can see the test result in a pop-up window and receive a test mail in the receiving mail box.
- **Mail Notify Internet IP Address:** if this item is checked, when internet IP or port is changed, IP will be sent through mail. If the port is set, please make sure that the port is mapped in router correctly through the virtual server function of UPNP or router. (take an example for the contents sent in the mail, IPCAM 's url is http://119.123.207.96:9002)

Alarm Settings



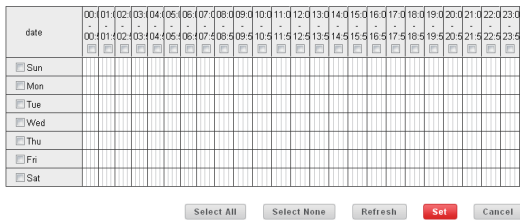
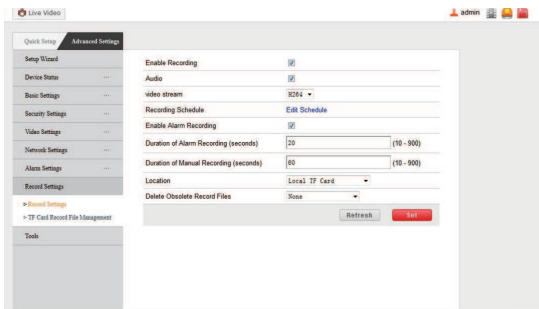
- Alarm Settings: set Enable alarm schedule, three alarm methods can be enabled, namely, motion detect, trigger detect and sound detect. It can also set the sensitivity.

Alarm Action Settings:

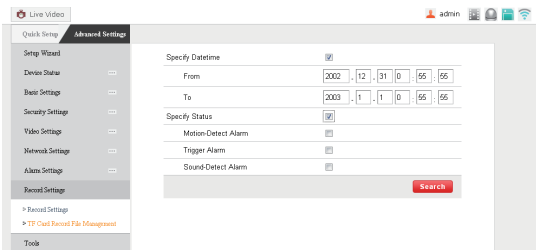


- Alarm Action Settings: the actions enabled after alarm.

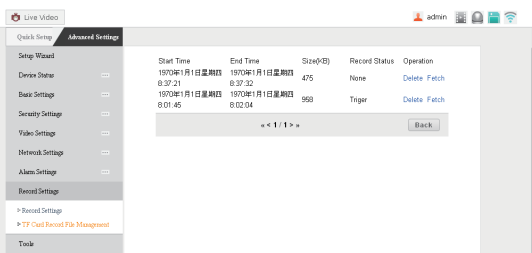
Record Settings



Record Settings, Edit Schedule

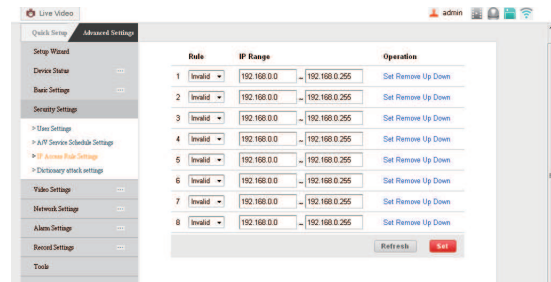
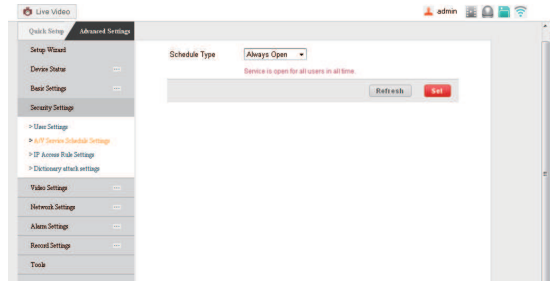


Record Settings and Record File Management



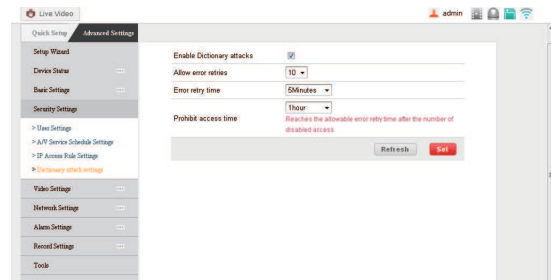
TF Card Record File Management. Search the file recorded, download it to local computer, and then you can watch it directly. (The player is  VLC. Download the latest version of VLC media player from <http://www.videolan.org>)

Security Settings

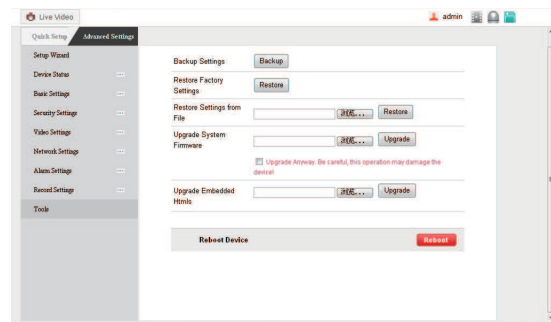


- set the date and time of camera access and the IP access permission.

Dictionary attack settings



Tools



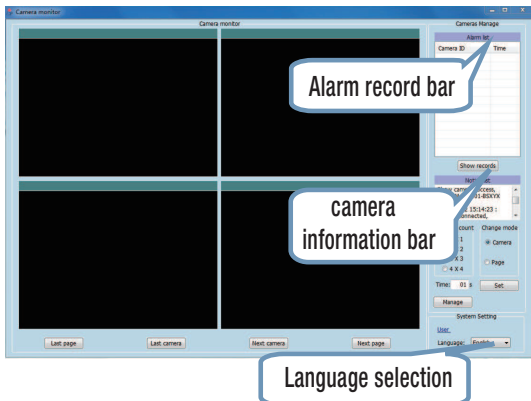
- Tools: Backup Settings, Restore Settings, Upgrade System Firmware and Upgrade Embedded HtmIs

1. Usage of PC Client Application Software

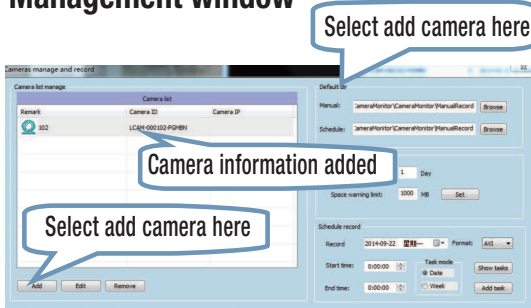
- Install and run the “camera monitor” software.
Enter the username and password



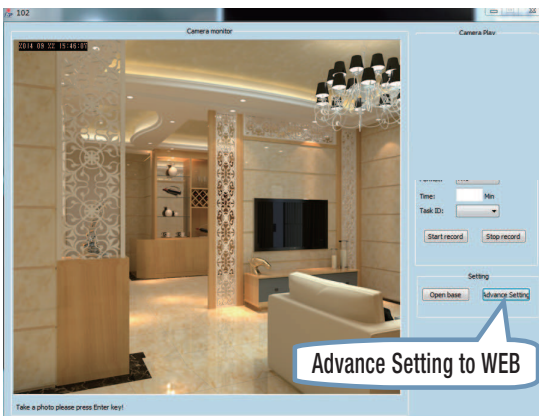
- Main control interface



- Management window

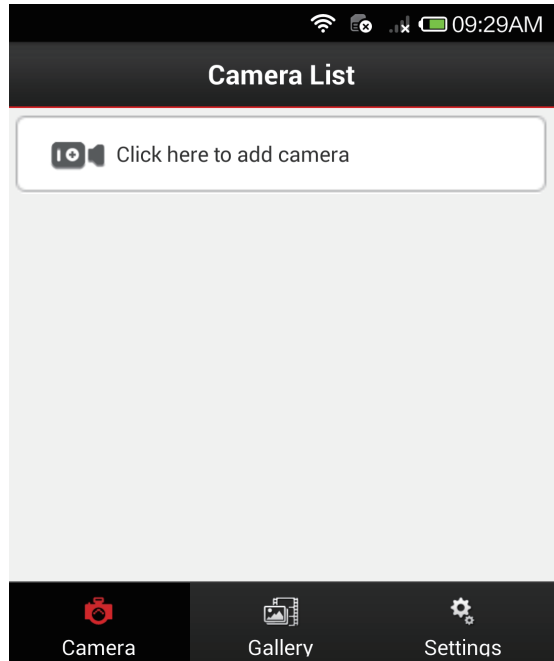


- Control window

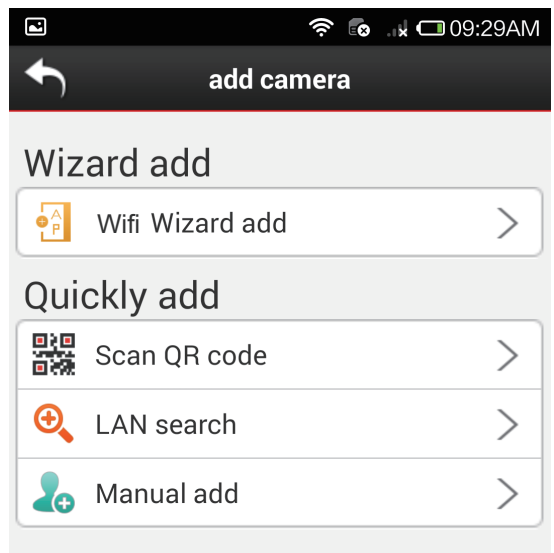


2. Usage of Phone Client Application Software

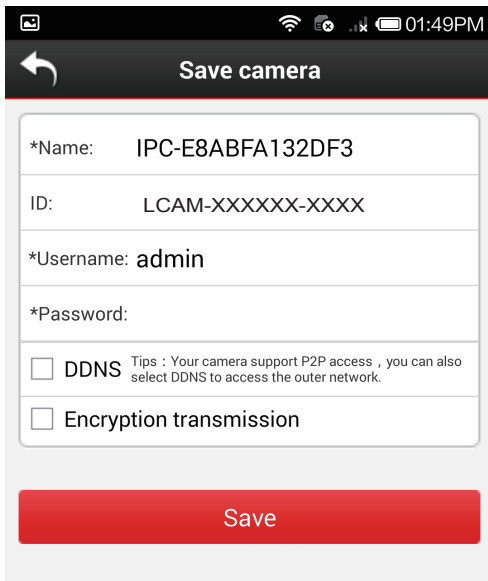
- Enable phone network function, install and run “LSCAM” software.
- Click “Click here to add camera”.



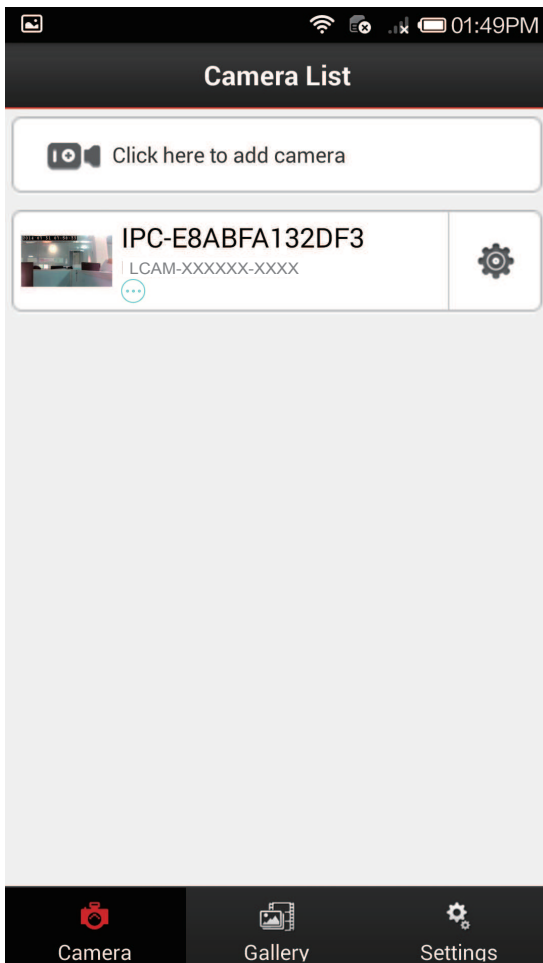
- Select different quick adding modes.



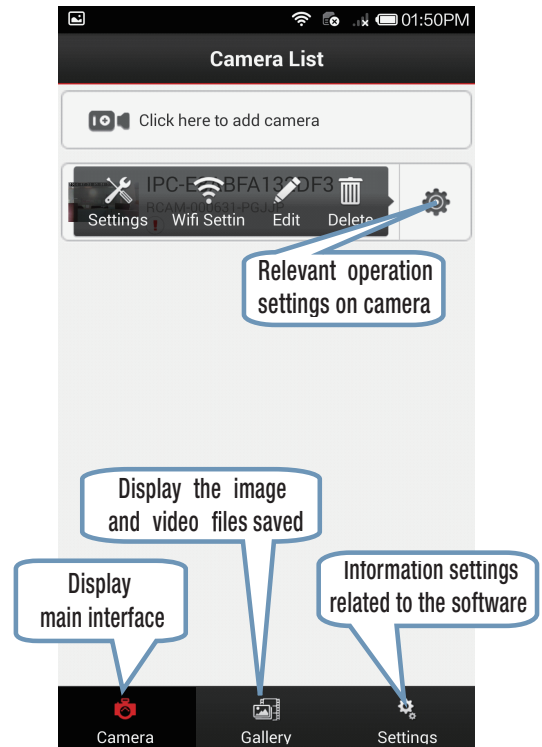
- **Input username and password and Save.**



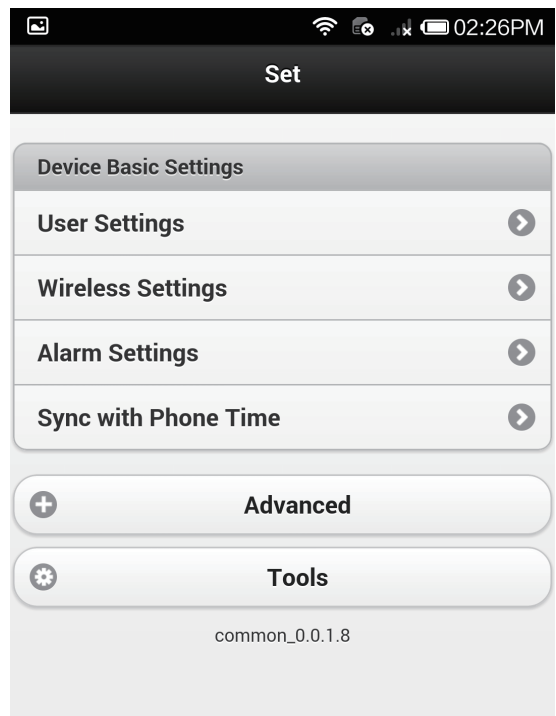
- **It is added if the following interface appears.**



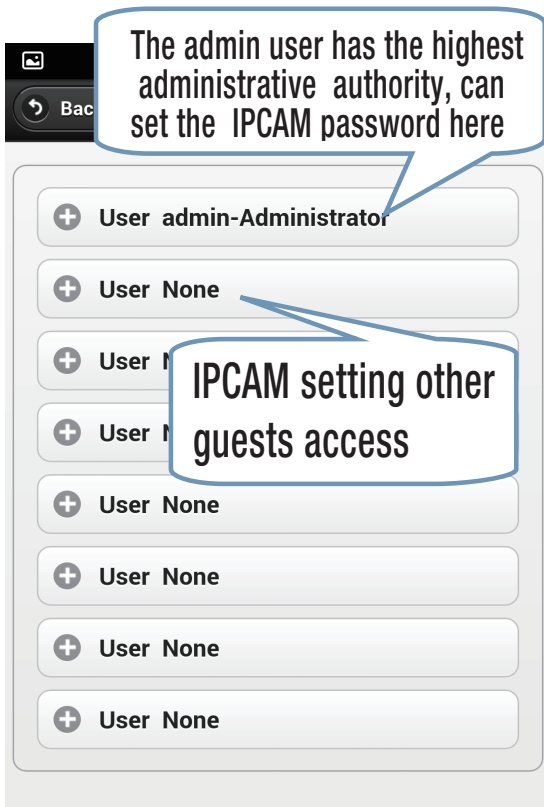
Explanations of menu in the main interface



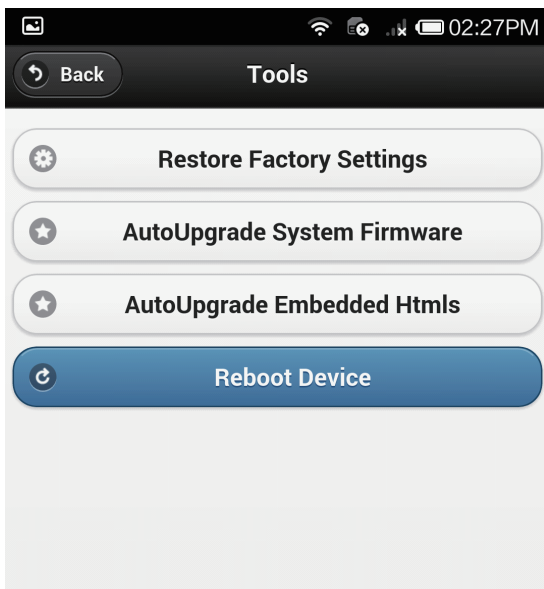
- **Settings interface**



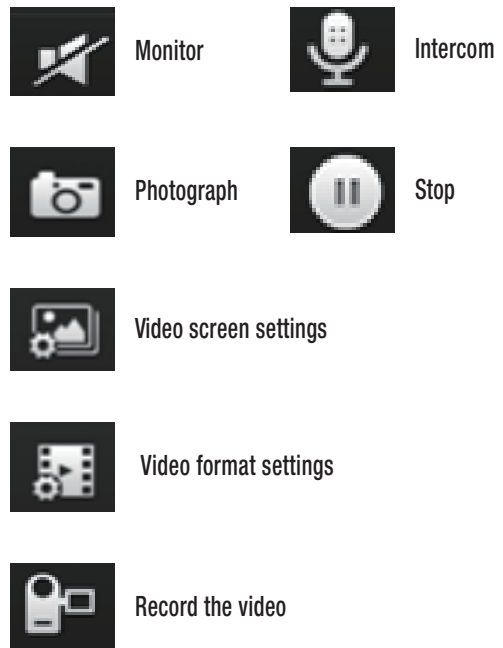
□ User Settings interface



□ User Settings interface



□ Surveil the video interface



FAQ

Change the binding router

There are two methods to change the bound router:

1. First set the IPCAM into "AP" mode and implement IP camera rapid configuration.
2. Use the administrator rights to find the wireless network setting menu in the client software and modify it

If the password is forgotten the solution

Is to long-press 10 seconds the RESET button in the IPCAM panel in the powered status, and all parameters will restore to default values (factory values). The factory user name is admin and password is null.

If You Face Any Problem, Please Check Your Network Firstly

Check the status indicator of network devices (concentrator, switch and network card). If they are abnormal, check your networking.

IP Address Error

Check the IP address of the device to see if it is in the same subnet segment with your local computer: open My Computer > Control Panel > Network & Dial-up Connection > Local Network > Internet Protocol (TCP/IP), examine subnet mask, IP address and gateway. When setting the IP address of the device manually, please make sure that they are in the same subnet. Otherwise, it can not visit the device normally.

Network Problem

Network Connection Problem

Make sure that your HTTP server software is configured correctly and runs well. If you have used any firewall software, make sure that the 80 port can be accessed externally. If you are using shared ADSL router, please ensure that the suitable port forwarding is set. (Please refer to the users' manual of your router). If these do not any problem, it may be because your internet service provider blocks the 80 port – to prevent worm virus, like Code Red. In this case, you may have to modify your port (for example, 8080).

Network Bandwidth Problem

The frame rate of images depends on the following factors: 1. network bandwidth; 2. performance of computer and network environment; 3. the quantity of users logging in the device (too much user access will lower the frame rate of images); 4. using a switch or a concentrator (use a switch rather than a concentrator if there are many devices). The quality of images transmitted will be better if the network bandwidth is broader.

No Image Displayed in ActiveX Plug-in

Video images are received and displayed to users through ActiveX plug-in. If the installation is not correct, the images may not be displayed. To solve this problem, there are two methods:

- 1) Install "IP Camera Tool", then the ActiveX plug-in will be installed at the same time (recommended).
- 2) Download and install ActiveX plug-in and modify the security settings of IE browser when visiting the device for the first time. Set three options in "ActiveX widget and plug-in" "Custom Level" "Security" "Internet Options" "Tools" "IE" browser as "Enable":

Enable: download unsigned ActiveX widget

Enable: conduct initialization and script running for the ActiveX widgets which do not signed as safe

Enable: run ActiveX widget and plug-in

Browser Faces a Problem

It is recommended to use FireFox browser to login the device. The download link of FireFox browser: <http://www.firefox.com>.

CHALLENGER

YOUR PARTNER IN A MORE SECURE FUTURE

Challenger security products

10 sandersons way

Marton

Blackpool

FY44NB

Email:enquiries.challenger@adivision.co.uk.

Tel:01253791888

